

## European Digestive Cancer Days 2017 CRC screening: Differences between on-going programmes - Germany



# Differences between on-going programmes Germany

---

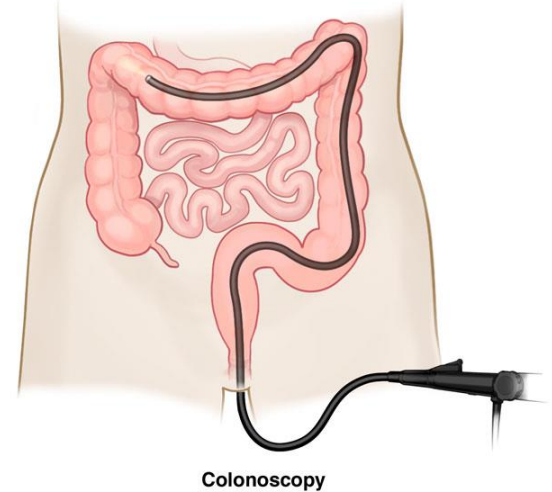
## A little bit of statistics:

- **62000 cases of CRC per year in Germany**
- **Incidence: 2nd in women , 3rd in men**
- **Mortality: 26.000 cases per year**
- **Age standardized death rates**
  - Decrease from 1999 to 2008
    - Females: -27.9%
    - Males: -20.5%

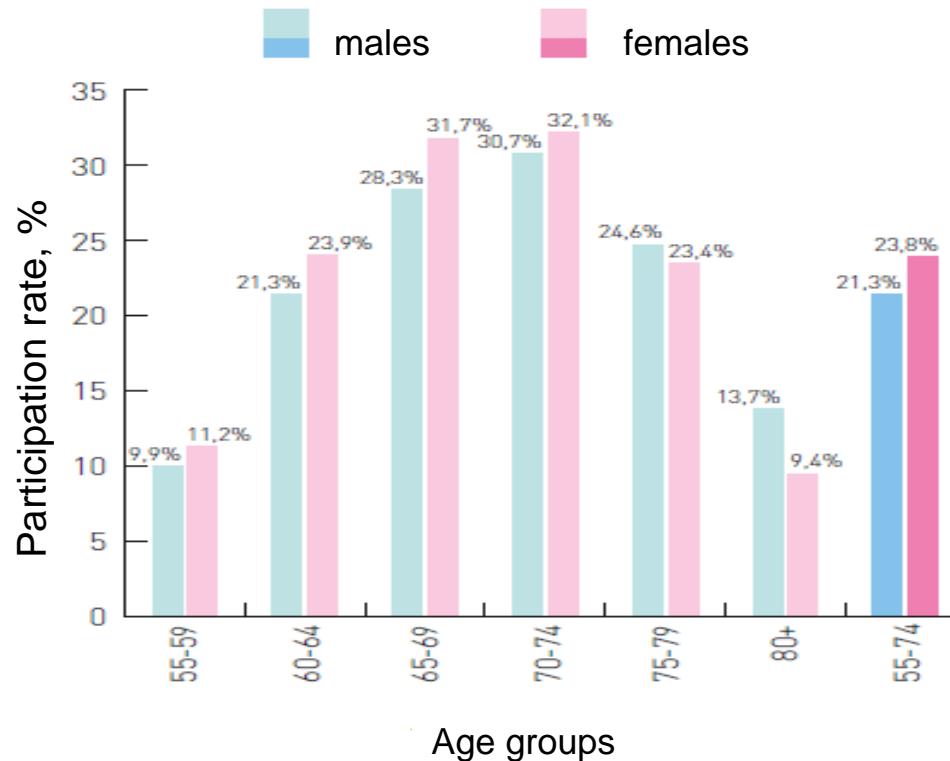
# CRC Screening in Germany

## Opportunistic screening

- **FOBT starting at 50, annual**
- **Since 2002: Colonoscopy**
  - starting at 55 years
  - if normal repeat after 10 years
- **Data from the ZI:**
  - 5.8 million screening colonoscopies =
  - 21.3% of all eligible males
  - 23.8% of all eligible females.
- Highest participation rates between 65-69 years:
  - 27.6% males
  - 30.5% females



# Cumulative participation in the screening colonoscopy program in Germany 2003-2014



# Participation in the German screening colonoscopy program

Author, year	Study population	Study location	Time of study	Result
ZI 2016	5 Mio participants in CRC screening	Germany	01.2003-12.2014	21.3% males and 23.8% females with screening colonoscopy; maximum participation in age group 65-69 Complications: 1.76/1000 colonoscopies
Hermann et al., 2015	15.014 participants in the EPIC trial (23-65 years)	HD	1994-2009, questionnaire every 3 years	Positive correlation between higher qualification/socioeconomic status and use of screening colonoscopy.
RKI 2012	Telephone interview of 22.050 people	Germany	09.2009-07.2010	86.4% of entitled persons were aware of screening colonoscopy, female > men (88.4% vs. 83.9%), higher education > lower (84.8% vs. 77.3%)
Stock et al., 2011	AOK Hessen, 108.225 insured persons	Hessen	01.2000-12.2008	23.2% of males and 26.3% of females over 50 years had screening colonoscopy

Factors that influence participation: Gender, higher qualification and socioeconomic status

# Results of Screening Colonoscopy in Germany

2014:

At least one adenoma

- 31.3 of males
- 20.4% of females

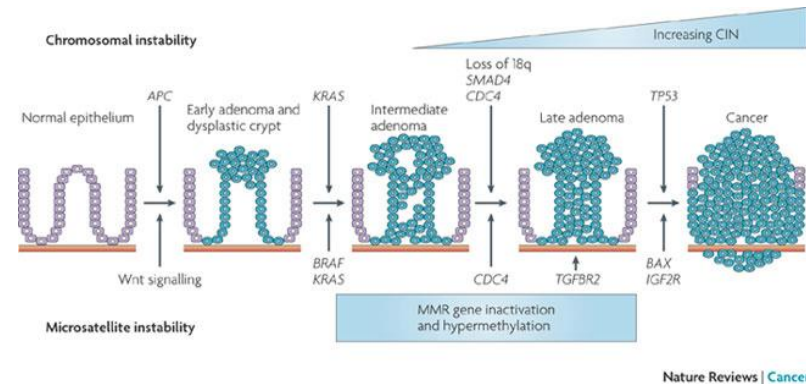
CRC

- 1.1% of males
- 0.6% of females

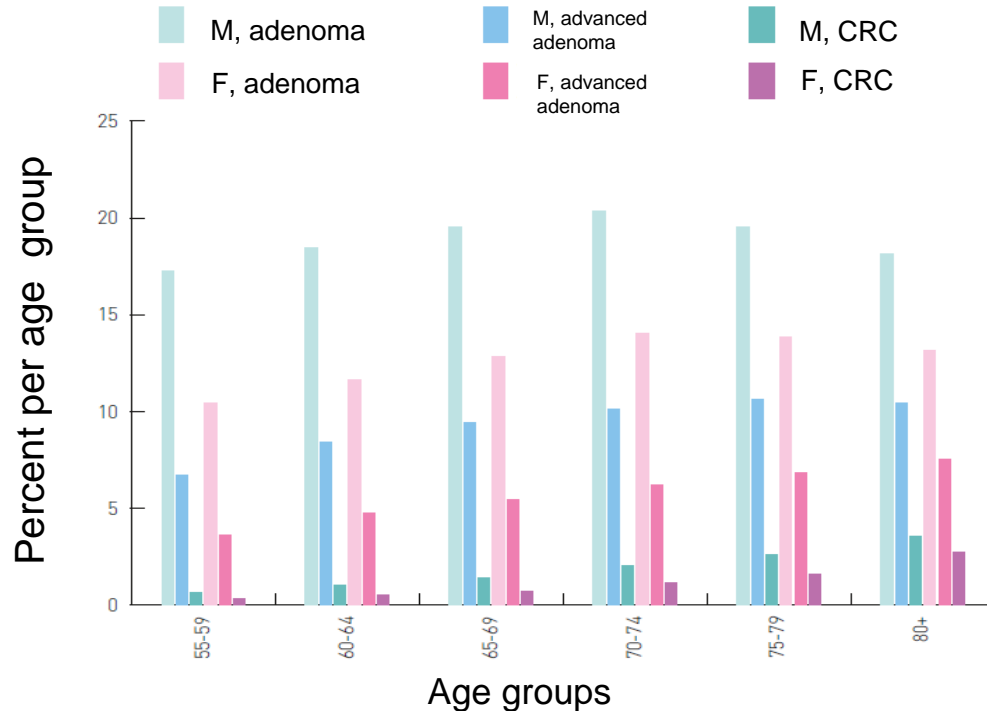
Advanced adenoma

- 8.4% of males
- 4.9% of females

Complication rate 1.76/1000 colonoscopies (bleeding, cardiopulmonary)



# Adenoma and carcinoma detection rates according to age in the German colonoscopy screening program (2003-2012)

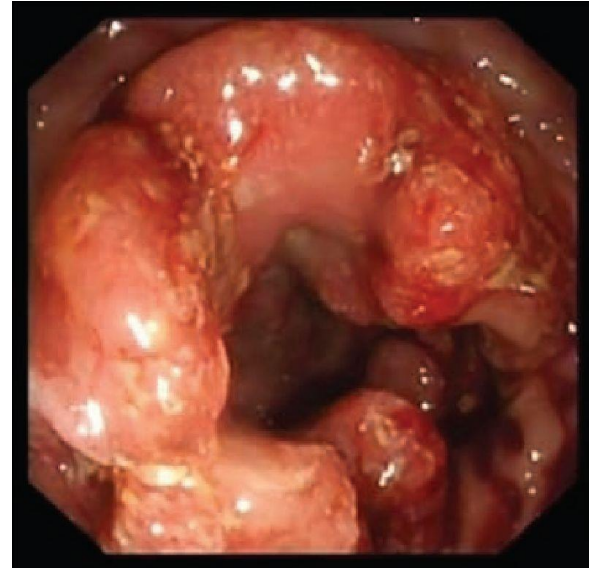


# Efficacy of Screening Colonoscopy in Germany

---

## Estimates 2003-2012:

- 180.000 CRC cases avoided (1/28 colonoscopies)
- 40.000 CRCs detected earlier than without screening
  - Majority of patients < 75 years
- 4.500 wrong diagnoses (28% in patients >75 years)





# CRC Screening in Germany: Novel Developments

---

- **Organized invitation scheme planned (KFRG 2013), but not yet implemented**
- **Novel since April 2017:**
  - FIT for screening reimbursed, will replace guaiac FOBT
  - Only quantitative tests
  - Quality assurance required
  - Implementation pending

